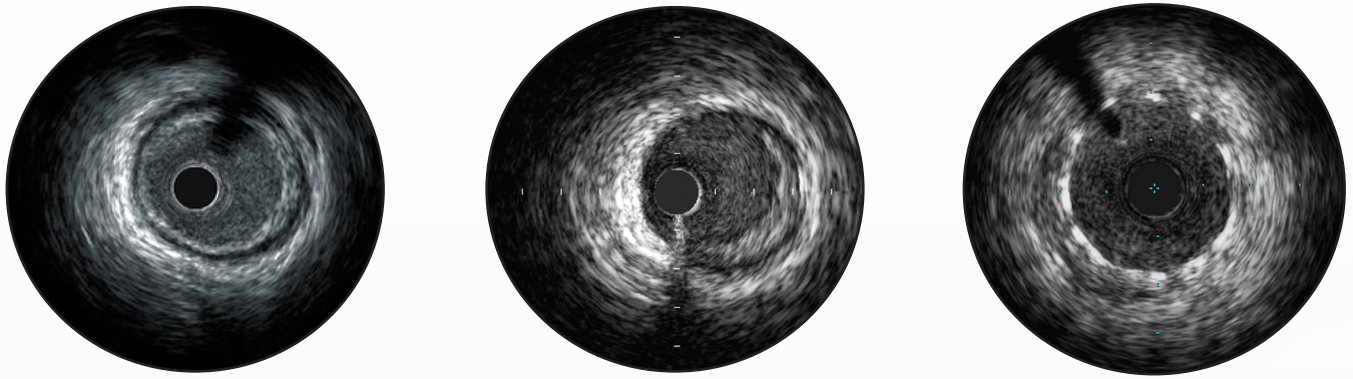
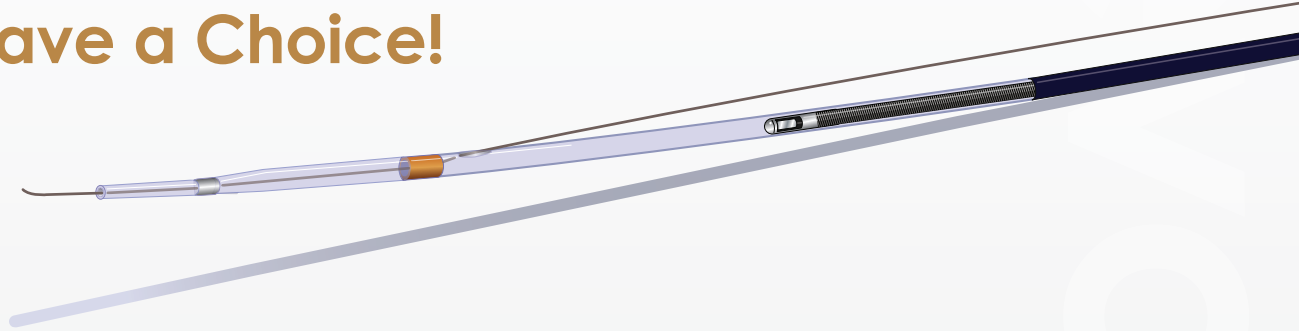


Revolution® 45 MHz IVUS Imaging Catheter

High frequency rotational imaging providing unmatched access and accuracy



You Have a Choice!



Clear Imaging

- 45 MHz high frequency rotational IVUS generates sharp, crisp images for reliable vessel interpretation and assessment
- Tightly wound Asahi Intecc drive cable reduces NURD (Non Uniform Rotational Distortion) for accurate measurements

Unmatched Access

- Low profile, flexible distal segment facilitates catheter tracking through challenging anatomy
- Polished, atraumatic radius tip facilitates distal access

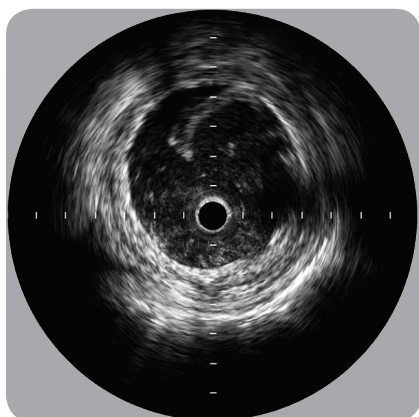
Exceptional Handling

- Reinforced telescope provides additional support and improves reliability
- Variable stiffness catheter shaft provides strength and pushability to negotiate tortuous vasculature

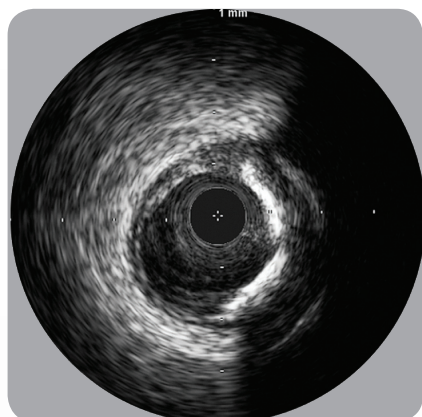


Volcano and the Volcano Logo are registered trademarks of Volcano Corporation.

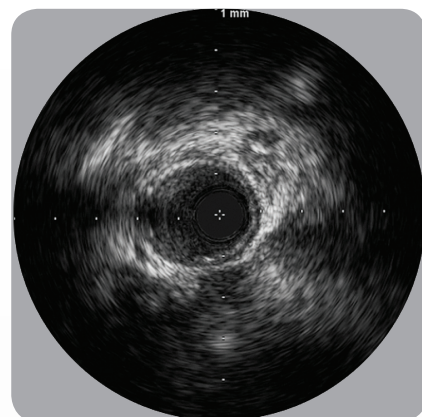
Revolution® 45 MHz IVUS Imaging Catheter



Vein Graft Dissection

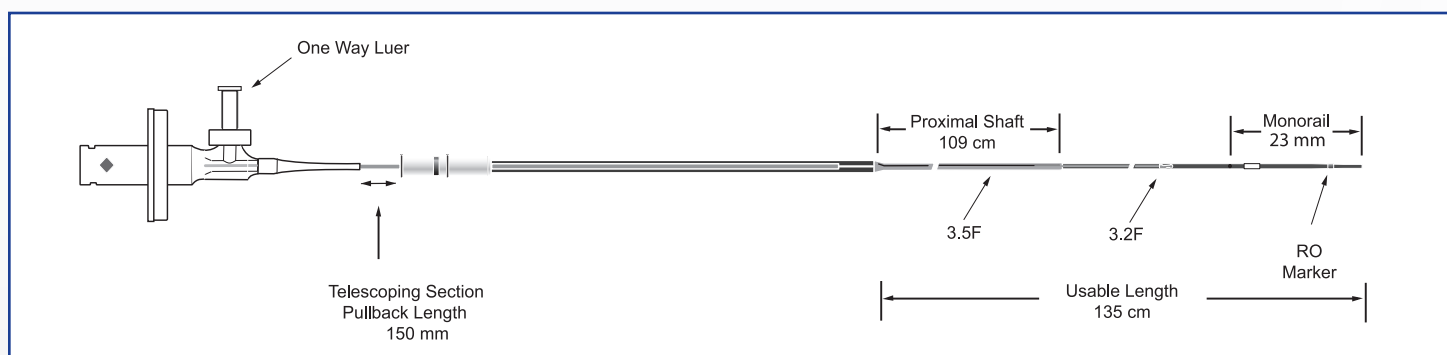


Calcified Lesion



Small Distal Vessel

Revolution® Catheter



Technical Specifications

Compatible Guide Catheter	Compatible Guide Wire	Outer Shaft Diameter	Scanner Diameter	Imaging Diameter	Working Length
6 F (ID > 0.064")	0.014"	3.5 F	3.2 F	14 mm	135 cm

Ordering Information

- Volcano s5 Revo Option (includes SpinVision®)
- SpinVision® Sterile Drapes
- Revolution® Catheter

S5REVO 04
891BG-10 10 pack
89000



Volcano Corporation
Corporate Headquarters
3661 Valley Centre Drive, Suite 200
San Diego, CA 92130 USA
Phone: 800-228-4728
Fax: 858-720-0325

Volcano Corporation
Manufacturing Headquarters
2870 Kilgore Road
Rancho Cordova, CA 95670 USA
Phone: 800-228-4728
Fax: 916-638-8812

Volcano Europe SA/NV
Europe Headquarters
Excelsiorlaan 41
B-1930 Zaventem Belgium
Phone: +32 2 679 1076
Fax: +32 2 679 1079

Volcano Japan Co., Ltd
Japan Headquarters
Hamamatsucho Square 6F
1-30-5, Hamamatsucho,
Minato-ku, Tokyo 105-0013, Japan
Phone: +81-3-6430-9400
Fax: +81-3-6430-9401